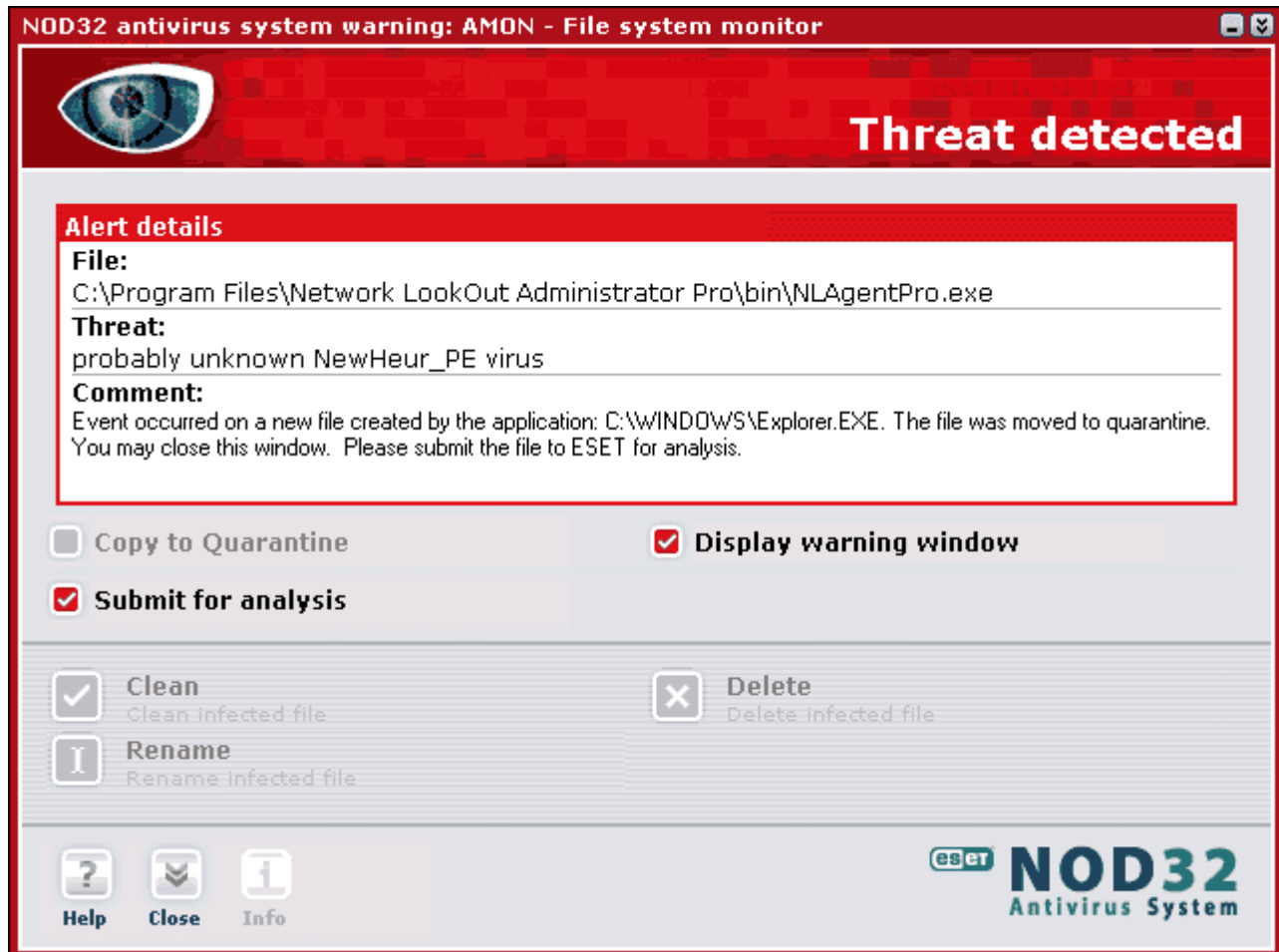


Configuring NOD32 Antivirus

IMPORTANT - please read!

NOD32 Antivirus can prevent our application from running properly, since it recognize it as **probably unknown NewHeur_PE virus**. The heuristic method analyzes the applications behavior. The method is not precise and it can flag also totally harmless applications as **probably unknown NewHeur_PE virus**. On the other hand this method can recognize unknown viruses.



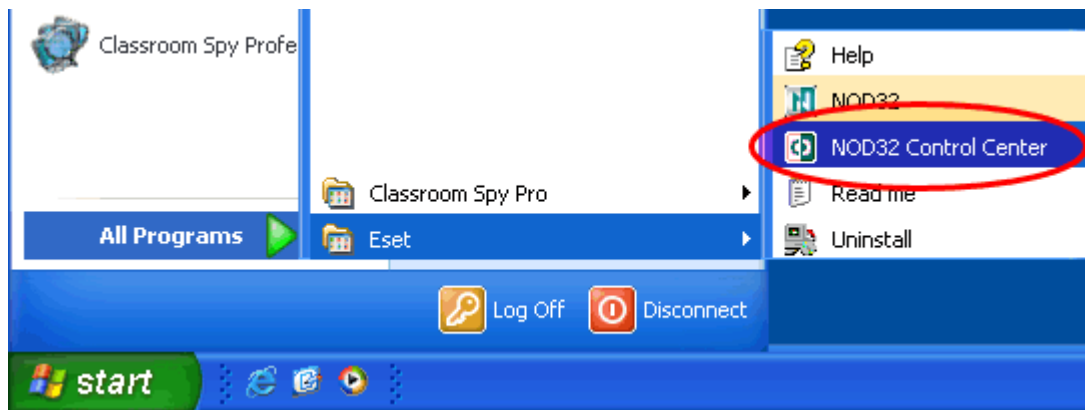
When our application become more popular, a lot of antispyware and antivirus programs started to recognize it as dangerous.

Our application does not open any secret doors or anything similar - it just allows you to monitor other computers and this is enough for antivirus and antispyware production companies to flag it as dangerous.

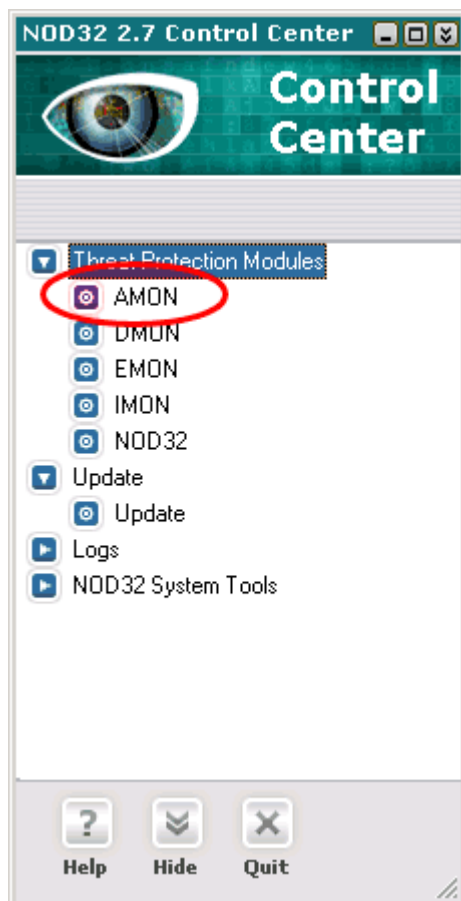
The only way to avoid this is to put the application on exclusion list. To do this, please follow the procedure:

IMPORTANT: Please put the application on exclusion list before you start the installation!

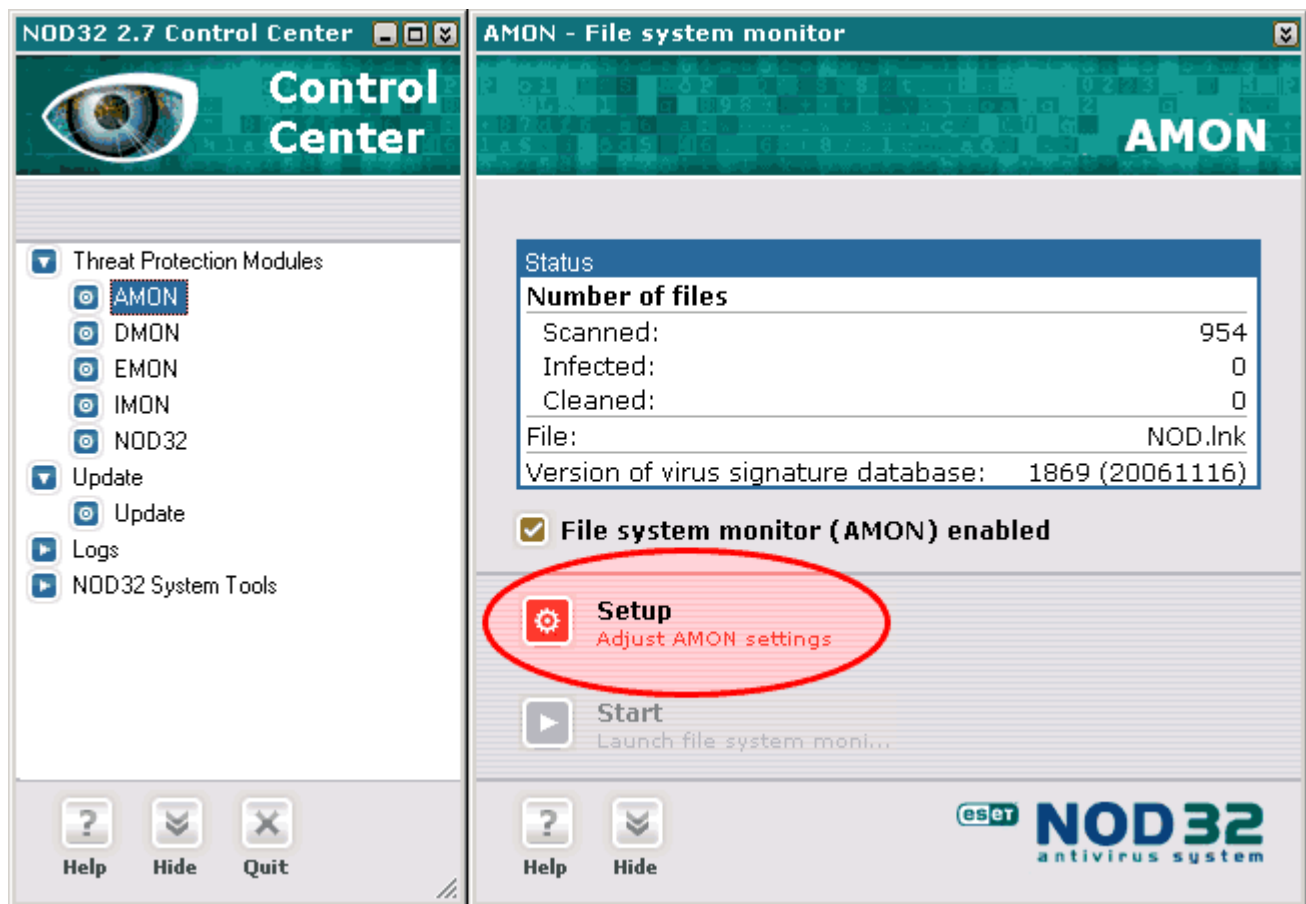
1. Open **NOD32 Control Center**



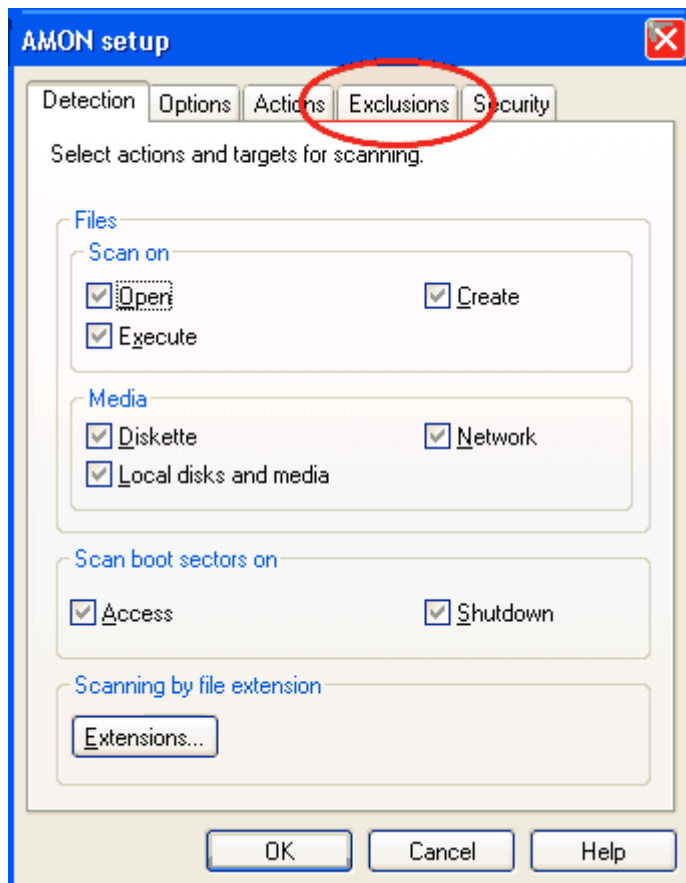
2. In the appearing window choose **AMON**



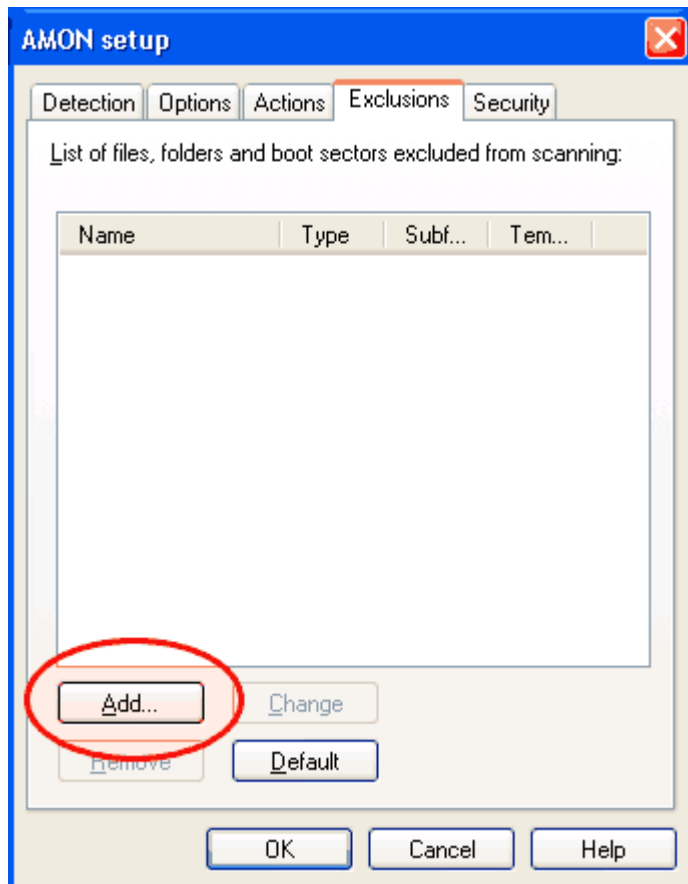
3. Choose **Setup**



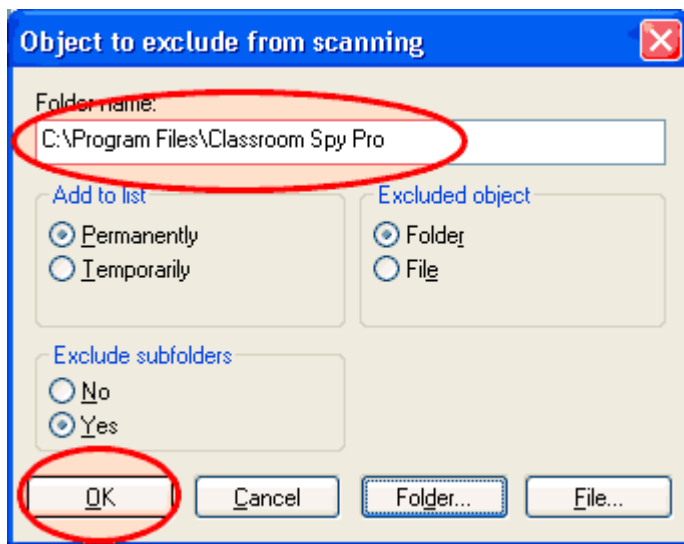
4. In the appearing dialog choose **Exclusions**



5. Click on **Add** button



6. In the appearing windows enter directory where you want to install the application and click **OK**



Please note that you have to enter exact directory where you want to install the application.

Default directories depend on the product:

PRODUCT	Directory
Classroom Spy Professional	C:\Program Files\Classroom Spy Pro
Net Monitor for Employees	C:\Program Files\Network LookOut
Net Monitor for Employees Professional	C:\Program Files\Network LookOut
Network LookOut Administrator	C:\Program Files\Network LookOut
Network LookOut Administrator Professional	C:\Program Files\Network LookOut Administrator Pro

You can add more directories if you want.

After that the application is on exclusions list.

IMPORTANT: Because our application was blocked, **you have to install it again.**

If you still facing any problems, please contact us using this email address:

support@EduIQ.com